

EtherDrive® SRX2800

High Performance Ethernet SAN Storage



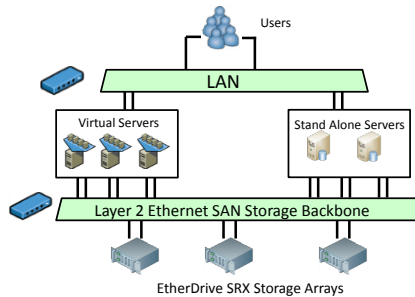
Key Features and Benefits

- ☒ **5-8x Price/Performance advantage over Fibre Channel and iSCSI storage arrays**
- ☒ **Access speed >1800 MB/sec sustained throughput**
- ☒ **CorOS™ parallel processing scale-out SAN operating system**
- ☒ **Distributed, modular architecture scales from a few Terabytes to Petabytes**
- ☒ **Automatic Load Balancing reduces bottlenecks; ideal for VMware environments**
- ☒ **Continuous RAIDShield™ testing fixes disk bad blocks; reduces drive failures**
- ☒ **RAID configuration stored on each disk**

Coraid is redefining the fundamental economics of storage with Ethernet SAN solutions that provide enterprises of all sizes with flexible, high-performance, scale-out storage ideally suited to dynamic HPC, video, virtualization and cloud environments.

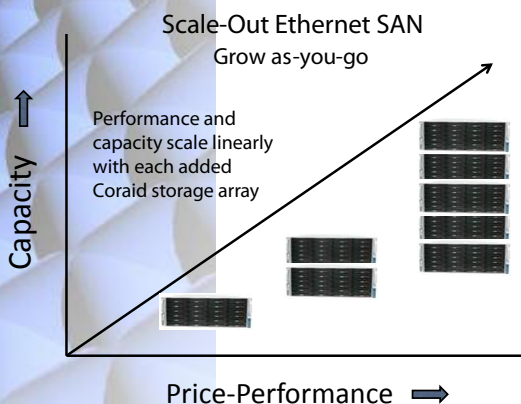
Disruptive Price/Performance

The EtherDrive SRX2800 is a scale-out Ethernet SAN storage appliance that combines innovative software, with proven industry standard hardware and Ethernet technology to provide fault tolerance, simplified administration, rapid deployment, enterprise performance and reliability, and seamless scalability. With support for 16 SSD, SAS and SATA disk drives the SRX2800 delivers disruptive price/performance up to 1800 MB/sec, 5-8x that of Fibre Channel and iSCSI with up to 32TBs of storage per SRX2800 (using 2TB disk drives).



Simplified SAN Management

Coraid's CorOS™ software provides the intelligence that enables rapid installation (minutes not hours), simple management, and RAID redundancy. The simplicity of EtherDrive Storage makes it easy to manage, because it's easy to understand. EtherDrive is a disk connected to your server via Ethernet. That disk may actually be a RAID volume, but it just looks like a local disk to the server. No need to learn complicated technology like Fibre Channel. Just add SAS, SSD or SATA disks to the EtherDrive Storage Appliance and you have all the space you want available for any server attached to the Ethernet SAN. It's that simple.



Scale-Out Design with Enterprise Reliability

SRX Series arrays use industry standard hardware and Ethernet to create a scale-out SAN storage solution that is ideally suited to high performance virtual computing and cloud storage environments.

The SRX series is designed to meet and exceed the ruggedness and reliability requirements of the data center. SRX2800 uses RAIDShield™ Coraid's powerful RAID algorithm that continuously test each disk in a RAID volume, and is able to automatically detect and repair bad blocks on the disk media. This means you won't be prematurely replacing good disks that were rejected by a typical RAID controller card when it tries to access one of these failed block locations.



EtherDrive SRX2800 Datasheet

| SRX2800 Specifications | |
|-----------------------------------|--|
| Form Factor | 3U rack mount chassis |
| Number Disk Drives | 16 hot swap |
| Disk Drives | SSD, SAS (15K RPM), SATA (7.2K & 10K RPM) |
| Capacity | 32 TB raw using 2 TB SAS or SATA disk drives |
| LUNs | 16 LUNs per system |
| Management | Command Line Interface (CLI) for set up. Scripts are supported. Syslog output for alarms. |
| Network Interface | SRX2800G6: Six 1 GbE, RJ45 SRX2800C2: Two 10 GbE CX4 & Two 1 GbE, RJ45 SRX2800C4: Four 10 GbE CX4 & Two 1 GbE, RJ45 SRX2800SR2: Two 10 GbE SFP+ & Two 1 GbE, RJ45 SRX2800SR4: Four 10 GbE SFP+ & Two 1 GbE, RJ45 |
| Sustained Data Rates | > 1800Mbytes/sec with 9K jumbo frames |
| RAID Types Supported | RAID 0, 1, 5, 6, 10, and JBOD |
| Power Supply | 100-240 VAC, 50/60Hz Redundant host swap power modules |
| Power Consumption with disk drive | < 650 Watts, heat load <2400 BTU |
| Cooling | 3 hot swap fans |
| Dimensions | 17.2 x 5.25 x 25.5 inches |
| Weight | 65 lbs w/o disks |
| Operating Temp | 50-95 degrees F (10-35 degrees C) |
| Relative Humidity | 20% to 90% (non-condensing) |
| OS Support | Vmware ESX/ESXi 3.5 4.0 and 4.1 Windows Server 2003 (32 & 64 bit) Windows Server 2008 R2 (64 bit) OpenSolaris 2009.06 Oracle Solaris 10 RedHat Enterprise 5 (64 bit) CentOS 5.4 (64 bit) Citrix XenServer 5.6.0 Linux Kernal 2.6 |
| Support Plans | eSupport Service Plan 24x7 Service Plan Zero Hour Support Service |
| Warranty | 36 Month |



Take the next step to learn more.

To Contact Sales send and email to [www.theblueprint-it.co.uk/coraid-storage](mailto:info@theblueprint-it.co.uk)
info@theblueprint-it.co.uk
+44 (0)207 665 4050

Coraid and EtherDrive are registered trademarks of Coraid. Coraid trademarks include RAIDShield and VirtualStorage.



www.coraid.com